



## Installing Version 10 of Design-Expert® Software

---



### What's New

Those of you who've used previous versions of Design-Expert software will be impressed with the many improvements in Version 10. In fact, these are too numerous to put into print here: See the "DX 10 Read Me" document installed with the program or link to <http://www.statease.com/dx10.html#features>.

---

### Getting Started

The first thing to do upon receiving Design-Expert is to **register your license**. You may register when you install the software by completing the online registration form. You must register the software to validate your warranty, qualify for free program and statistical support, and become eligible for future updates. If this software is installed on a network, please send us a list of all users so we can keep them informed of the latest developments.

Version 10 of Design-Expert software (DX10) is shipped on a compact disc (CD) or downloaded via the internet. It runs on 32-bit and 64-bit Microsoft Windows®. The CD includes the following:

- Design-Expert installation files
- Tutorials in Adobe® PDF format
- Data files for the tutorials

Minimum hardware and operating system requirements appear below:

Component	Minimum
Processor	1 GHz
Hard Drive	250 MB free space
RAM	2 GB
Display	1024x768
Operating System	Windows Vista SP2 or Windows 7 SP1 or Windows 8/8.1 or Windows 10

---

## Single-User Installation

### Compact Disc (CD)

You may need to disable virus-protection software and firewall defenses if they interfere with the installation. Insert the CD-ROM into your drive. The installation should automatically start via the auto run feature. If it doesn't, then

- Open the **Windows Explorer** (E) and locate the CD drive.
- Open the folder.
- Launch the **Install.exe** program by double clicking its icon.

The main menu offers choices for installing the program and extracting the tutorial files. The **Install Design-Expert 10** choice should be checked and select either 32-bit or 64-bit depending on your operating system. Click **OK** to initiate the installation.

Skip ahead to the **License Agreement** section below.

### Internet Download

If you chose the download option when purchasing the software, the program downloads in a single file named **dx10-setup-x64.msi**, or **dx10-setup-x86.msi** if you have a 32 bit version of Windows. Using Windows Explorer, find this file in your chosen download folder and double click it to begin installation. The Stat-Ease program group in the Start menu contains a shortcut named "...Installation Notes..." that should be referred to for instructions specific to downloaded software (versus details below that relate more to content delivered via CD-ROM).

### License Agreement

Once launched, the installation program loads and displays the license agreement shown here. Read the agreement. If you accept the terms, check the box labeled "**I Accept...**" and press **Next** to continue. If the terms are not acceptable to you, choose **Cancel** to abort the installation.

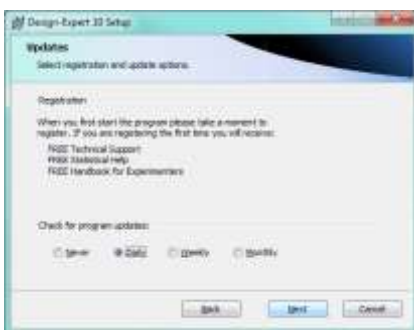


## Installation Steps

Choose the destination folder or keep the default (recommended).

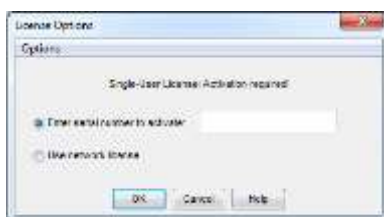


Consider registering the software online. You will be given an option to register the first time you install the software.



## Activating the Program

The first time you run the program you will be asked to activate it by entering the 16-digit key we provided you. When you click OK, Design-Expert will connect via the internet to our activation server and authenticate the license.



If you know that you are using a network license, choose the *Use network license* and click on **OK**. See the **Workstation Setup** in the Appendix for more instructions.

## Manual Activation

If the program is unable to connect to the Stat-Ease activation server you will be offered the chance to manually activate the

software. If you answer yes, the browser will be launched pointing to your account on our web site and you will be able to interact with the program and our web site to activate your software.

Log in and choose click the **Manual Activation** button. Copy the Host ID from the **Copy License Text** dialog in the program and paste it into the appropriate field on our web site then click OK. Copy the license text that appears on the web site and past into the multiline text field in the **Copy License Text** dialog then click OK. The program will save the text to a license file in the appropriate location on your computer.

### Activation Options

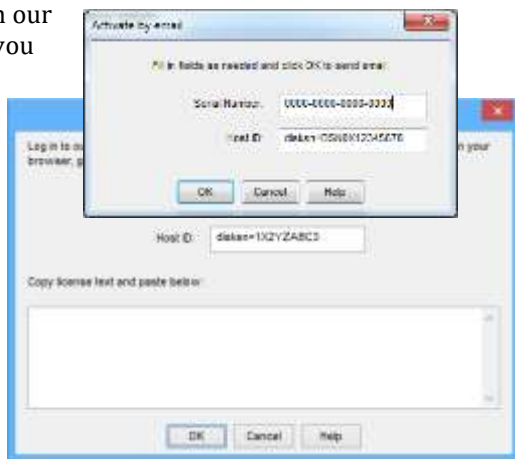
For unusual circumstances, there are four utilities available in the **Options** menu. These options allow for copying an already existing license file, activating by email for a specific Host ID, setting the HTTP proxy and deleting old license data.



#### *Activate by email*

If your computer can't reach our server via the internet and you are unable to perform the manual activation procedure described above, you will need a license file sent to you.

Click on the **Options** menu and choose *Activate by email* to send the 16-digit serial number and Host ID to us. If you do not have an internet connection, send an email from some other system to [activate@statease.com](mailto:activate@statease.com) with the serial number and Host ID displayed in the dialog.



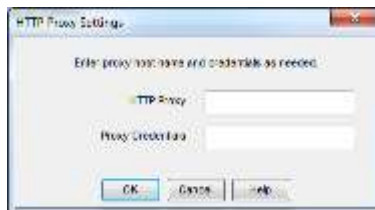
### Copy license

We will reply to valid email activation requests with a license file which you can then use the *Copy license* option to copy the new license to your computer. Activate by browsing to the location of the license file then clicking OK. The license file will be copied to the proper directory on your system and the program will be activated.



### Set HTTP proxy

If you know that your system has a proxy server, you can enter the host name of the proxy. Click on the **Options** menu and choose *Set HTTP proxy*. The host name should be entered in the form *host\_name:port\_number* if the port number used by the proxy is not the default 8080. If you need to set the proxy credentials, they can be entered in the form *user:password*. Note that only BASIC authentication type is supported.



### How to Uninstall the Program

To uninstall Design-Expert software, use the Programs and Features utility found in your Windows Control Panel. Select Design-Expert 10 from the list and follow the instructions to remove the program.

### Running the Program

If you chose not to have an icon placed on your desktop, open the Stat-Ease program group that resides within Programs in your Start menu. There are several shortcuts in this group, including your Design-Expert program, Read Me file, and Manual/Tutorials group (an option described above). Simply click on the Design-Expert icon shown at right to execute the program.



---

## Network Install

See DX10 Network Installation document.

---

## How to Access Tutorials

Your installation CD-ROM includes tutorials for Adobe Acrobat's portable document format (pdf) that are viewable using their free Reader software. The tutorials are also available via the internet at [http://www.stateease.com/dx10\\_tut.html](http://www.stateease.com/dx10_tut.html). There you will find a handy flowchart that provides guidance on choosing tutorials that match your level of program know-how. Titles correspond with the pdf file names. This web site also provides "feature tours" on what's new with this version (originally developed as an aid to beta testers) and other educational resources.

---

## How to Get Support

Before calling for support, be sure to look at:

- ◆ This document.
- ◆ The "Program Hints and FAQ" section in our Design-Expert program Help. (Frequently asked questions (FAQ) also reside in our "Read Me" file installed in your Stat-Ease folder).
- ◆ The Stat-Ease web site (listed below) for downloadable program patches (free!) and updated documentation in portable document file (PDF) format that's viewed using the free Adobe Acrobat Reader.
- ◆ Information and online discussions available in our Stat-Ease support forum (see below). You may visit anonymously or register to post questions and comments.

To obtain program support from Stat-Ease, you must be a registered software owner or a user on a licensed network. The quickest way to get help is to call us, but email works particularly well because you can attach your data file. Please provide your Design-Expert version number and serial number before stating your question.

Here's how you can reach us:

Web site: [www.stateease.com](http://www.stateease.com)  
Email: [support@stateease.com](mailto:support@stateease.com)  
By mail: Stat-Ease, Inc.  
2021 East Hennepin Ave, Suite 480  
Minneapolis, MN 55413



Phone: (612) 378-9449

Fax: (612) 378-2152

We provide limited free help of a statistical nature. While it never hurts to ask, we may suggest that you purchase some statistical consulting. Often we can give you valuable help with only a few hours of paid time. For a free cost estimate (and perhaps a free answer to your problem!), give us a call and ask for statistical help, or email: [stathelp@statease.com](mailto:stathelp@statease.com).

---

## Files

Installed within the Design-Expert version 10 software ("DX10") program folder are:

- **DX10.exe**, main program
- **cario.dll**, Cairo graphics library
- **Master.chm** HTML-based help file
- **Read\_Me\_DX.html**, program update information and tips
- **License.rtf**, license agreement
- **libiomp5md.dll**, Intel Math Kernel Library (MKL 7.2) library index

Installed within the Windows system or common file folders:

- **Microsoft\_VC110\_MFC\_\*.msm**, Microsoft Foundation Class 11.0 library merge module
- **Microsoft\_VC110\_CRT\_\*.msm**, MS Visual Studio 2012 C++ runtime library merge module

Intel Math Kernel Library (MKL 7.2):

Stored in the C:\ProgramData\Stat-Ease\Design-Expert 10 folder after activation:

- **dex.lic**, Program license file

## *Trademarks*

*Stat-Ease*, *Design-Expert*, and *Statistics Made Easy* are registered trademarks of Stat-Ease, Inc.

*Windows* is a trademark of Microsoft Corporation.

Any other products mentioned by brand name are trademarks of their respective companies.

## *Copyright*

Information in this document is subject to change without notice and does not represent a commitment on the part of Stat-Ease, Inc. The software described in this document is furnished under a license agreement. The software may be used or copied only in accordance with the terms of this agreement.

No part of this publication may be reproduced, transmitted, stored in a retrieval system, or translated into any language in any form by any means without the permission of Stat-Ease, Inc.

© Copyright 2016 by Stat-Ease, Inc. All rights reserved.